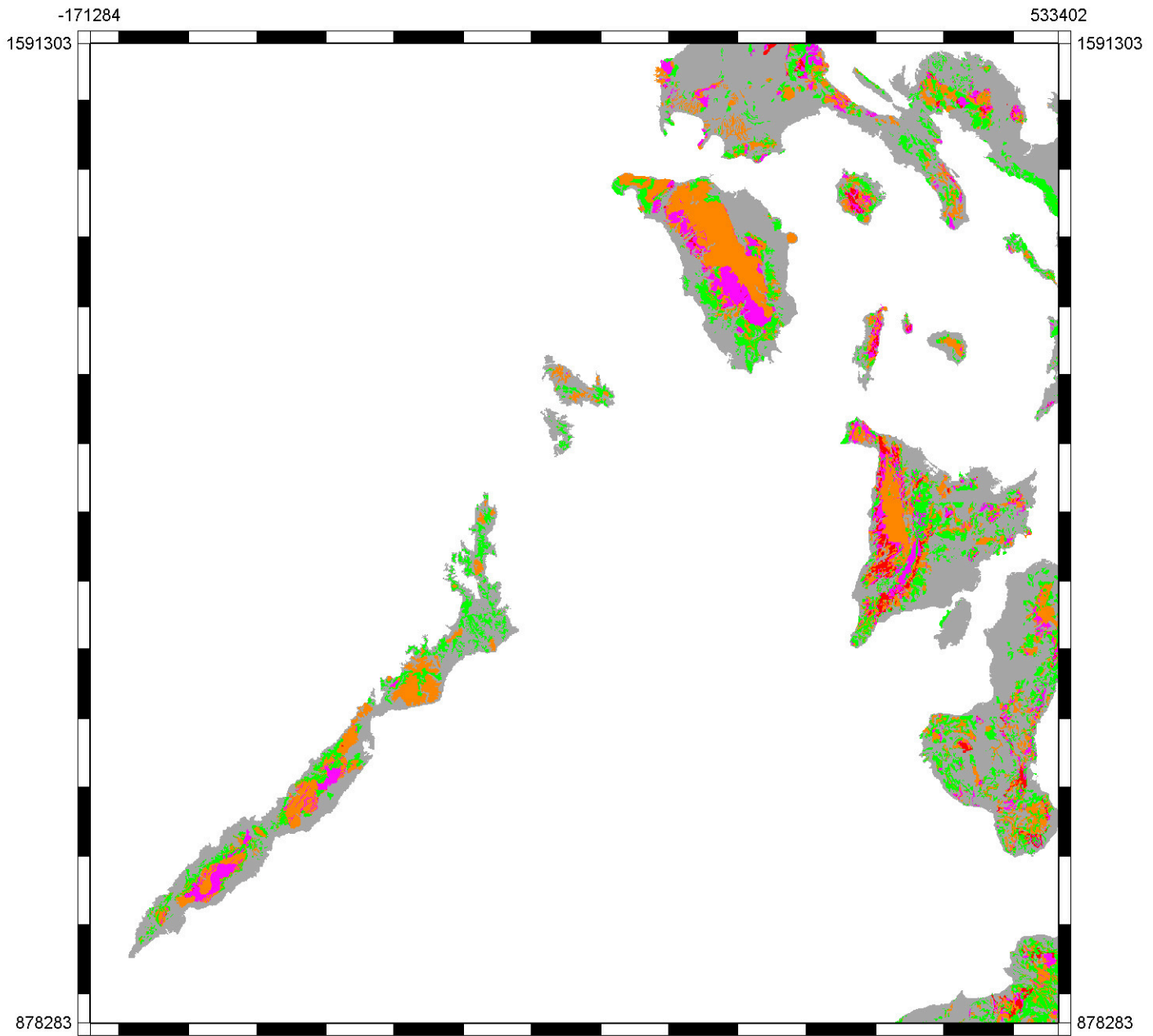


Earthquake-Triggered Landslide Susceptibility Based on Critical Acceleration Values and Earthquake Intensities Region IV-B



- 100 NONE; Not Susceptible
- 0.3 LOW; MMI-IX; PEIS-VIII
- 0.15 MEDIUM; MMI-VIII; PEIS-VIII
- 0.07 HIGH; MMI-VII; PEIS-VII
- 0.04 VERY HIGH; MMI-VI; PEIS-VI

Peak Ground Acceleration in g
 MMI: Modified Mercalli Intensity Scale
 PEIS: PHIVOLCS Earthquake Intensity Scale

Source: PHIVOLCS-DOST